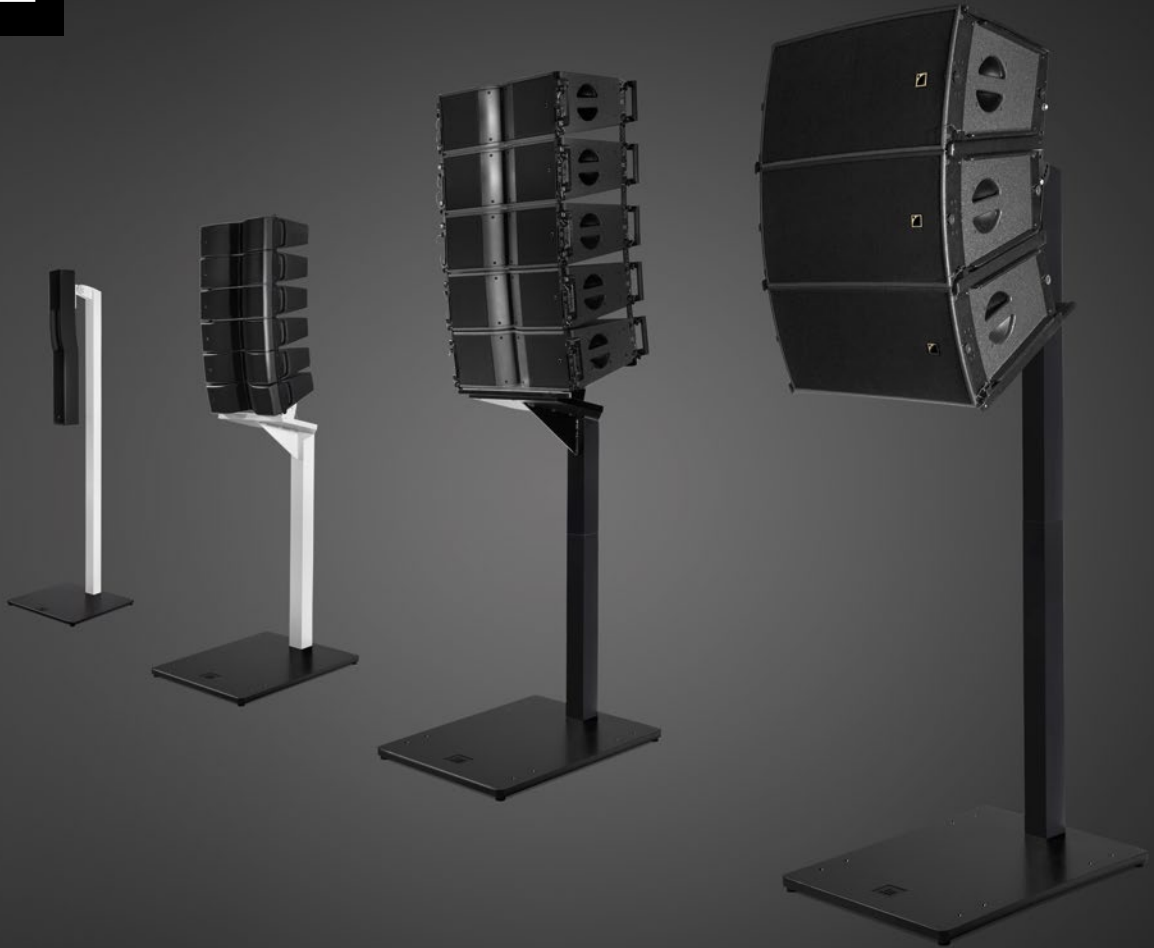




Excellent
Line



Alpha
Line for L-Acoustics

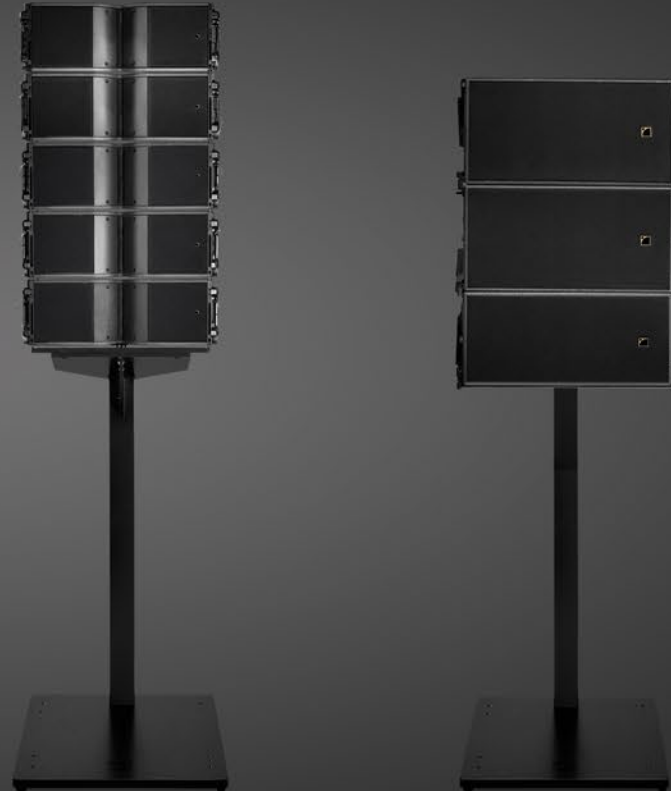
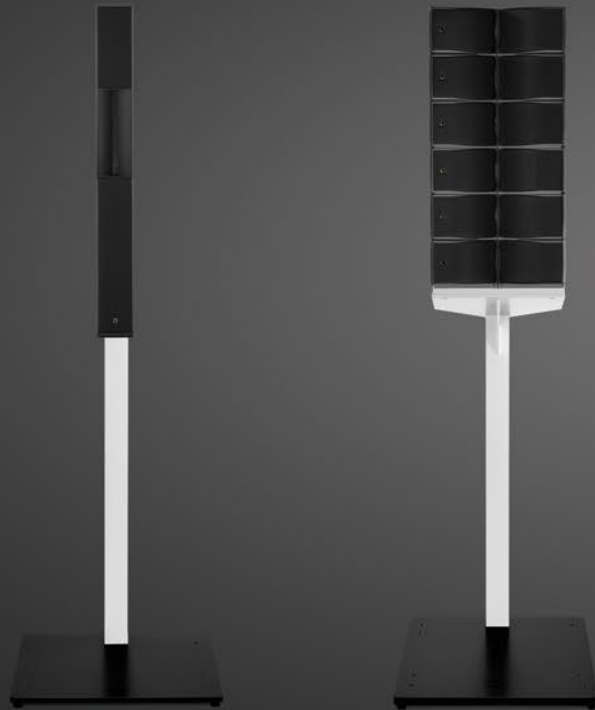


Functional Specialized

The Excellent Line offers the perfect balance between purist design and functional technology for first-class atmosphere.

The new Excellent Line Alpha was specially developed for the high-end entertainment sector, making it the perfect complement to L-Acoustics loudspeakers.

Alpha Line for L-Acoustics
Syva, Kiva II, Kara
and ARCS.



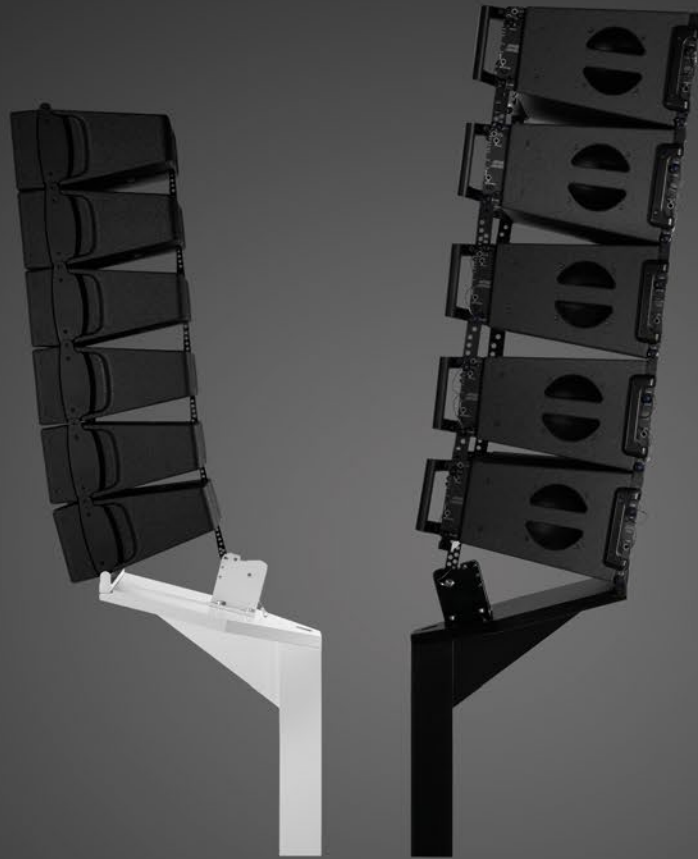
The Excellent Line Alpha is the stand system for L-Acoustics small and medium-sized speaker systems. The Excellent Line Alpha System is the first system to support L-Acoustics ARCS, as a vertical or horizontal speaker array. The solid baseplate can support L-Acoustics Syva Low/Sub, SB15 or SB18 subwoofers and, thanks to eight additional drill holes, can also be mounted to supporting structures. All components allow potential equalisation to be carried out.

The BP800 and BP1000 baseplates
can house L-Acoustics
Syva Low/Sub, SB15 and
SB18 subwoofers.



The adapter head
for the L-Acoustics Syva
can be tilted by up to -10° .

A special cover also conceals
the rotating mechanism.



The adapter head
for the L-Acoustics Kiva II
and Kara allows the first module
in the array to be tilted.

The adapter head
for the L-Acoustics ARCS
can be mounted vertically
or horizontally.



DesignStand Alpha

for L-Acoustics



Applications
indoor stand for
L-Acoustics
loudspeakers



Height Options
Permitted
total height
400 cm



Adapter Heads
adapter heads
for L-Acoustics Syva,
Kiva II, Kara and
ARCS (Wide/Focus)



Capacity
max. recommended
load 180 kg



Baseplates
BP1000 and BP800
with decentralized
mount

Components for L-Acoustics



Adapter Heads

L-Acoustics Syva
adapter head | 9kg
L-Acoustics Kiva II
adapter head | 22 kg
L-Acoustics Kara
adapter head | 22 kg
L-Acoustics ARCS
adapter head | 46 kg



Extensions

100 cm | 6.4 kg
80 cm | 5.4 kg
60 cm | 4.4 kg



BP800



BP1000

Baseplates

BP800 | 35 kg
BP1000 | 61 kg

L-Acoustics Syva



Baseplate

The L-Acoustics Syva adapter head can be combined with the baseplate BP800.



Top

L-Acoustics Syva

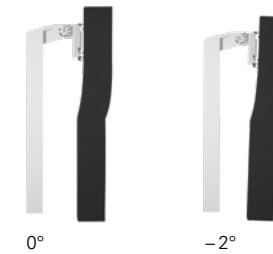
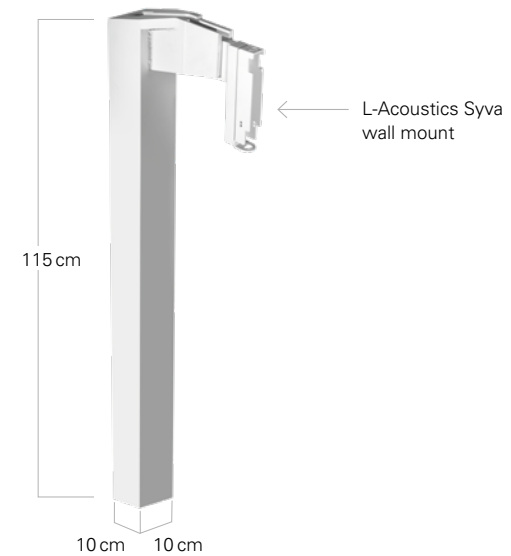
BP800

L-Acoustics Syva Low and Sub

Adapter Head

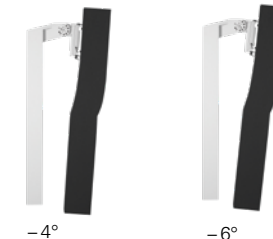
for L-Acoustics Syva

Color: RAL 7035



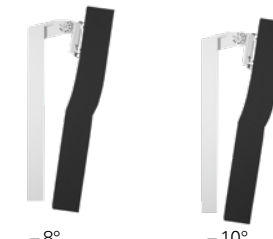
0°

-2°



-4°

-6°



-8°

-10°

The L-Acoustics Syva colinear system is fixed to the L-Acoustics Syva wall mount using the Excellent Line adapter head for the L-Acoustics Syva. The vertical tilt can be set to 0°, -2°, -4°, -6°, -8° or -10°. Horizontal rotation is achieved through the L-Acoustics Syva wall mount.

L-Acoustics Kiva II and Kara



Baseplate

The L-Acoustics Kiva II and Kara adapter heads can be combined with the baseplate BP1000.



Top
L-Acoustics Kiva II

BP1000
L-Acoustics SB15



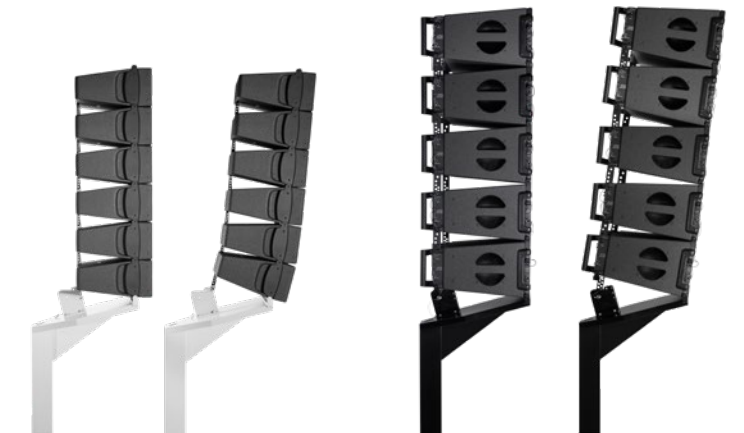
Top
L-Acoustics Kara

BP1000
L-Acoustics SB18

Adapter Head

for L-Acoustics Kiva II and Kara

Color: RAL 7035, RAL 9005



Depending on the required application, a fitting for the L-Acoustics Kiva II or Kara can be attached to the adapter head. The maximum load is 180 kg. The lowest linear array element can be tilted by up to 15° in steps of 1°.

Tilt
The lowest linear array element can be tilted by up to 15° in steps of 1°.

L-Acoustics ARCS Wide/Focus



Baseplate

The L-Acoustics ARCS adapter heads can be combined with the baseplate BP1000.



Top

L-Acoustics ARCS Wide/Focus

BP1000

L-Acoustics SB15

Adapter Head

L-Acoustics ARCS Wide/Focus

Color: RAL 7035



Vertical operation

The L-Acoustics ARCS stand can hold up to four L-Acoustics ARCS Wide, L-Acoustics ARCS Focus, or a combination of the two, when used vertically. When deployed vertically, the L-Acoustics ARCS mounting table can be tilted downwards at angles of 15° to 30°, 45° or 60° from the original angle.



Horizontal operation

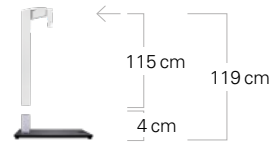
The tilting mechanism can be used to rotate the vertical array, made up of a maximum of four L-Acoustics ARCS Wide, three L-Acoustics ARCS Focus, or a mixed combination of three units, into a horizontal position. The second titling mechanism can be used to rotate the horizontal array from -30° to +30°.

For more detailed information please see www.excellent-line.com/l-acoustics

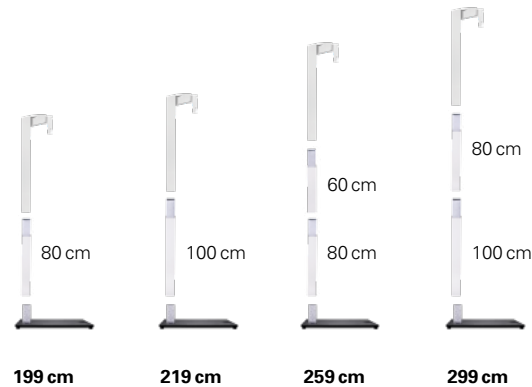
The high-quality aluminium stand consists of several square tubes measuring 10 × 10 cm at lengths of 60 cm, 80 cm and 100 cm and has a specially adapted L-Acoustics adapter head for Syva, Kiva II, Kara or ARCS systems.

The square tubes are hollow and can be used for cabling. The system can be positioned at a variety of heights thanks to the different tube lengths. The total height of the L-Acoustics ARCS system depends on the tilt angle and the nature and number of L-Acoustics ARCS units used.

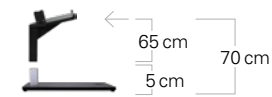
Height Options for L-Acoustics Syva



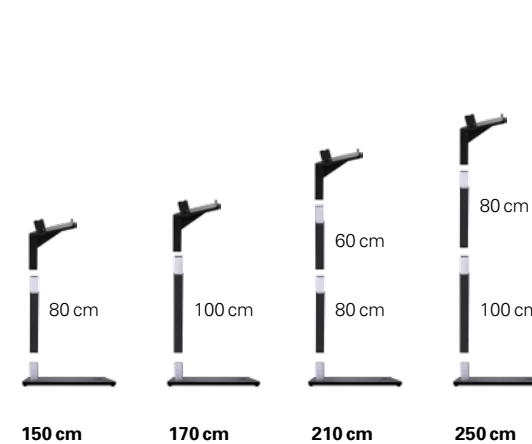
Baseplate and Mount
for L-Acoustics Syva



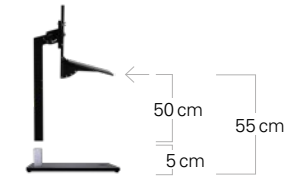
Height Options for L-Acoustics Kiva II und Kara



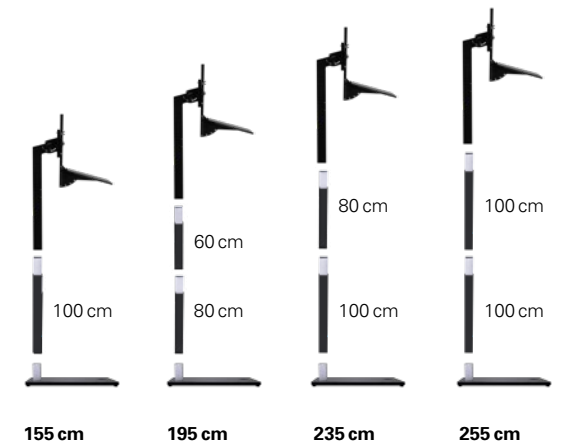
Baseplate and Mount
for L-Acoustics Kiva II and Kara



Height Options for L-Acoustics ARCS



Baseplate and Mount
for L-Acoustics ARCS



The BP800 baseplate can support L-Acoustics Syva Low and Sub subwoofers and has eight additional drill holes for fixed mounting or mounting to supporting structures.

The BP1000 baseplate can support L-Acoustics SB15 and SB18 subwoofers and has eight additional drill holes for fixed mounting or supporting structures.

Baseplate BP800

Color: RAL 9005



**L-Acoustics Syva
Low and Sub**

**L-Acoustics
SB15**

Baseplate BP1000

Color: RAL 9005



**L-Acoustics
SB15**

**L-Acoustics
SB18**

Let us advise you on the capabilities of
Excellent Line Alpha:
+49 (0) 54 52–97 33 10

The components of Excellent Line Alpha are manufactured
and distributed in Germany.



H.O.F. ALUTEC Metallverarbeitungs GmbH & Co. KG
Brookstrasse 8
D-49497 Mettingen

T +49 (0) 54 52–97 33 10
F +49 (0) 54 52–97 33 19

sales@h-of.de

All technical details and images correspond to the current state of the product line; technical improvements may follow without notification. Printed in October 2018.

The Excellent Line is a developing brand,
so we welcome your feedback:
vision@excellent-line.com

