

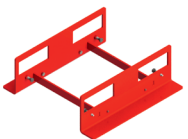
ACCESSORIES



DISTANCE HOLDER

Stacking support for the MLT² Dolly to the truss.

Art. Nr. 114350MLT2DH



FORKLIFT ADAPTER

The steel adapter protects truss, cable and other technology during transportation with a forklift truck.

Art. Nr. 114350MLT2FL



ACCESSORIES BOX

Art. Nr. 114350MLT2AB



CURVING TOOL

Practical tool for adjusting 10-70 mm forks.

Art. Nr. 114350MLT2TOOL1



FIXING TOOL

Tool for locking the screw forks.

Art. Nr. 114350MLT2TOOL2



SOFTSHOCK WHEEL

Shock absorbing and resilient rollers, ideal for the transportation of the MLT² Dollies.

Art. Nr. 114350MLT2SSW

MLT² - MOVING LIGHT TRUSS²



The MLT² is available in the following lengths:

Art. Nr. 113350MLT23200BK 3200mm
113350MLT22400BK 2400mm
113350MLT21600BK 1600mm

Powder coating in any RAL color is possible.



The **FOLDING DOLLY** is easy to handle as only one person is needed to connect the truss to the dolly.

Art. Nr. 114350MLT23200 3200mm
114350MLT22400 2400mm
114350MLT21600 1600mm

ACCESSORIES



RAINCOVER

Rain protection for lighting technology during load-in, load-out and during the show.

Art. Nr. 114350MLT253



LOWERING SET

Height adjustable additional main tube to conveniently add smaller lamps into the MLT².

Art. Nr. 114350MLT2632 3200mm
Art. Nr. 114350MLT2624 2400mm
Art. Nr. 114350MLT2616 1600mm



ROTATABLE FORKS



ADJUSTABLE LEGS



FOLDING DOLLY



SOFTSHOCK WHEELS
FROM BLICKLE (GERMANY)

MLT² PRE RIG TRUSS



Hermann the German says
**BENEFIT FROM
OUR GERMAN
EFFICIENCY.**

H.O.F. Alutec
Metallverarbeitungs GmbH & Co. KG
Brookstraße 8
D-49497 Mettingen
P +49 (0) 54 52-97 33-10
sales@h-of.de
www.h-of.de

f i t y
@hofalutec

MLT²

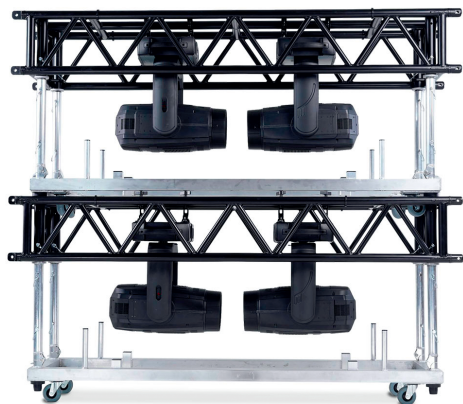
H.O.F.

FAST SETUP? SMALL CREW?

USE THE MLT² PRE RIG TRUSS!

Setup and dismantling times have drastically decreased compared to the pre-Covid era. On top, crews have become much smaller.

But there is help - the **MLT²** offers **German efficiency at its best.**



EASY HANDLING

Handling can be done with 1 person only as it takes **only 1 person to connect the truss to the dolly**. Up to 10 dollies without truss can be stacked on top of one another. The only limiting factor here is the height of the user, not the dolly itself.



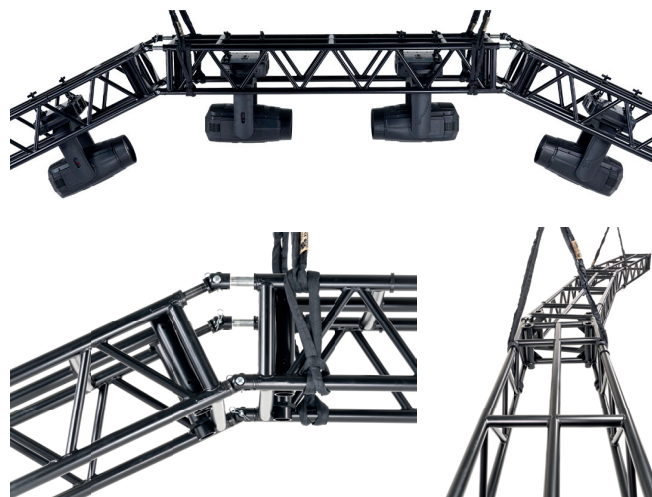
FAST ASSEMBLY

Also, setup and dismantling times can be drastically decreased as **the moving lights remain in the MLT²** during transportation - shock absorbing wheels from Blicke help to protect them; ideal for both heavy and top-heavy loads up to 380 kg.

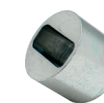


MAXIMUM FLEXIBILITY

And last but not least: with the MLT² you can **create curved truss systems without extra components**. Screw the forks out of the trusses by up to 70 mm (in total 140 mm) in order to create vertical or horizontal circles. This feature offers you maximum flexibility without having to buy special spacers for creating circles with different diameters.



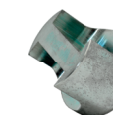
ACCESSORIES



MOUNTING TOOL MALE FORK

To mount the screw forks (male) of the MLT² Trusses.

Art. Nr. 114350MLT252



MOUNTING TOOL FEMALE FORK

To mount the screw forks (female) of the MLT² Trusses.

Art. Nr. 114350MLT251



SPACER MALE/FEMALE

Black powder coated

Art. Nr. 114350MLT2SP100 100mm

Art. Nr. 114350MLT2SP200 200mm

Art. Nr. 114350MLT2SP300 300mm

Art. Nr. 114350MLT2SP400 400mm



TRUSS PROTECTOR

For 48-52mm tubes, black PVC

Art. Nr. 1582911



LOCKING PIN

To secure the MLT² truss to the Dolly

Art. Nr. HOF30021



TRUSSPIN HACKA

Art. Nr. 1139919